



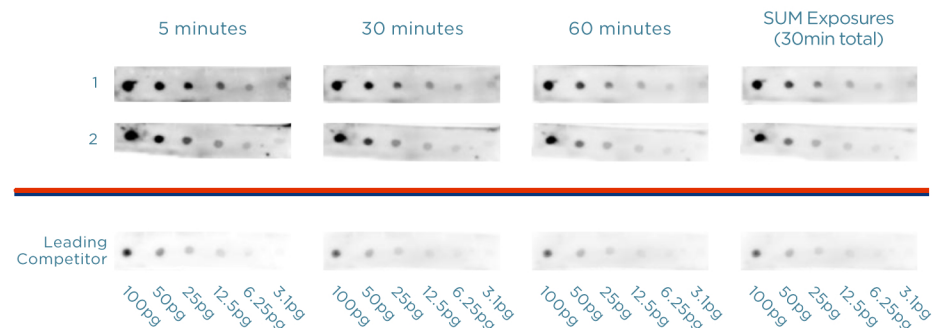
## WESTERN BLOTTING REAGENTS

The HRP detection reagents comes in a traditional 2 component system and brand new single bottle system. Both offer variations detection at the femtogram level with very little to no background and can be applied on PVDR or nitrocellulouse.

### PRODUCT LIST

HRP Blotting High Sensitivity 2 component western blotting reagent	M113093	50 ml
	M113094	100 ml
	M113095	500 ml
HRP Blotting High Sensitivity Single Bottle Single bottle western blotting reagent	M113096	50 ml
	M113097	100 ml
	M113098	500 ml

## HRP SUBSTRATE COMPARISON



- Dot Rabbit IgG on PVDF (thawed 1/30/14)
  - 100pg, 50pg, 25pg, 12.5pg, 6.25pg, 3.13pg
- Block 5% Milk/TBST 1 hour
- Incubate in conjugated antibody for 2 hours
  - Goat  $\alpha$ -rabbit-HRP 1:10,000 in 5% milk/TBS-T (1/30/14)
- Wash 3x TBST 10 min
- Incubate in substrate 5min, drain XS on filter paper
  1. Femtoglow<sup>TM</sup> Western 2 Bottle Reagent
  2. Femtoglow<sup>TM</sup> Western Single Reagent
  3. Leading Competitor
- Expose on cooled CCD camera for 5 minutes at the indicated length of time after addition of the substrate
- Analyze images on MutiGauge software for relative signal intensities with background correction

### SIGNAL INTENSITY CORRECTED FOR BG FOR 5 MIN IMAGE

